

Hyundai **ELANTRA**

Ace the chase



 **HYUNDAI**

Don't just chase, ace it.

The new ELANTRA introduces "DYNAMIC PRECISION", the identity of a brand new exterior style through Fluidic Sculpture 2.0. The exterior comprises of a dynamic and sophisticated profile and completes the modern and future-oriented design.

Opt for Hyundai ELANTRA, your next move towards victory.

 2.0L I4 DOHC 16 Valves

 154 HP @ 6,200 rpm

 6-Speed Automatic Transmission





Clear the roads for a grand impression

Dare yourself to be the heroic front of
all endeavors that push beyond the ordinary.
Be bolder. Be fearless.
Be the finish line in the race to success.



Hexagonal Radiator Grille
Hyundai's signature hexagonal front grille
creates a bold and dynamic design identity.

**Sporty Bumper
with Air Curtains**
To help elevate looks along
with aerodynamics.

Light up the path ahead

Tetra LED Projection headlamps improve lighting performance at wider angle to secure a sufficient view for the driver.



Headlight Delay

The lights guide you to the doorstep as they remain lit till 15 seconds after you lock the vehicle.



Daytime Running Light (DRL)

Daytime running light's (DRL's) slick wing design delivers a future-oriented image.



Tetra LED Headlamps

Tetra LED headlamps illuminate the road with crisper, more intense light than any other headlamp while using lesser power.





A power packed profile

A profile packed with noticeably remarkable features are all what make the ELANTRA a standout car.



Character Line

Emphasizes the ELANTRA'S dynamic but refined image by accentuating the side character line and volume on the lower side area.



LED Outside Mirrors

Mirrors are electrically -controlled, while LED repeaters add a touch of refinement.



Shark Fin Antenna

The shark fin antenna, which boasts superior sensitivity, is a premium styling point in the sporty exterior design.



16" Alloy Rims

The smarter, the better

When you open the doors to the future, it has to be in style. Equipped with the innovative and advanced Smart Entry system, the Smart Door handles illuminate as you move to enter.



**Smart Door
Handle**



Engine Start/Stop Button

The engine starts quickly at the press of a button when the Smart Key is inside the vehicle.



Smart Trunk

When a person holding a Smart Key stays in a position near the rear trunk for approximately 3 seconds or longer, the trunk opens and is propped upward.

Give your followers a great view

The ELANTRA comprises of a dynamic, moderate and sophisticated profile, and offers a modern, sporty and future oriented design.



LED Rear Combination Lamp
Produces a multi-dimensional and premium feel using high-tech graphic details.



Sporty Bumper with Reflectors



Rear Camera with Dynamic Parking Guidelines





Open up to new challenges

Beauty that transcends within, manifesting an open-air driving experience into an alluring interior and exterior design.



Smart Power Sunroof

The sunroof is made for those special days when you want to enjoy the sunshine and fresh breeze. A safety sensor prevents closure.



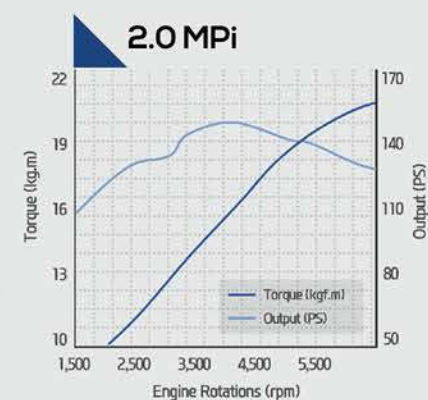
Drive from a position of power

The Hyundai ELANTRA comes with a 2.0 MPI gasoline engine that makes it the most powerful in its class. This allows the driver to accelerate whenever and as much as desired.



2.0 MPI Gasoline Engine

Engine type	DOHC
Displacement (cc)	1,999
Max. Power (HP(ps)/rpm)	154(156)/6,200
Max. Torque (Nm(Kgf.m)/rpm)	195(19.9)/4,500



Lightweight

- Aluminium Block, Plastic Intake Manifold.

High Fuel Efficiency

- Low Friction Seal, Friction Reduction, Coatings on Moving Systems.
- Exhaust Cooling Reinforcement.

Quietness

- Lower Crankcase, Direct Accessory.





Optimized and comfortable

Displaying confident mastery over materials and forms, the cabin space exudes an air of inviting comfort and luxurious exclusivity.



Claim your throne

Discover Hyundai's secret for comfort in the fully adjustable, 10-way powered driver seat; which comes fully equipped with Lumbar Support.



2-Way Powered Lumbar Support



Cup Holders



Front Console Box



8-Way Powered Driver Seat



Step out of the ordinary as you step in

From the basic layout to the execution of the details, the ELANTRA's interior design reveals itself to be roomy, comfortable and simply brilliant.



Seat Folding System (60:40 type)

The rear seats can be folded flat in 60:40 ratio and create a conveniently versatile load space.



Rear Armrest with
Cup Holder



Rear AC Vents



Break through the barriers of the ordinary

Driver centric horizontal layout, arrangement of buttons grouped by function and ergonomic design redefine the interior experience in the ELANTRA.





Move the world as you move ahead

Captivating multimedia and atmospheric adjustments secure exceptional convenience.



8" Infotainment System
Can be operated conveniently thanks to its touchscreen. The Bluetooth function lets the driver listen to music and make calls safely while driving.

Wireless Charging



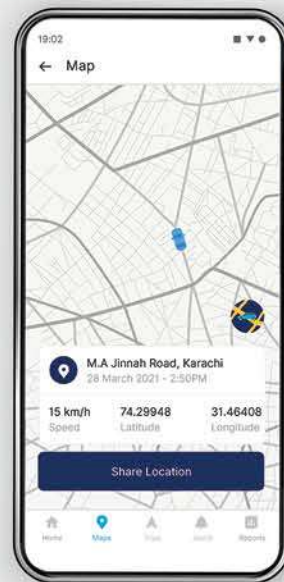
Clean Air
An in-car ionization system that helps to purify the air flowing in through the climate control system.



Dual Zone Auto Air Conditioning
The driver and passenger enjoy individually customized comfort.

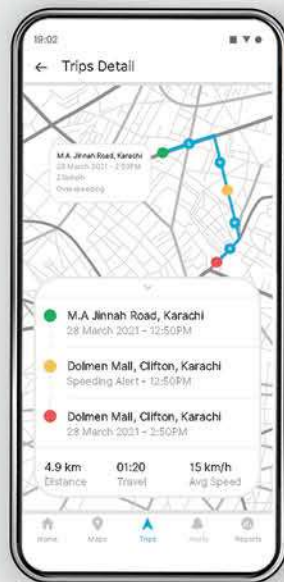
Top convenience based features.

Introducing MyHyundai - an app to digitally sync your car to your phone and monitor it using a range of convenience based features from the comfort of wherever you are.



Maps

This feature allows the user to locate the vehicle's current location, address and speed. To monitor multiple vehicles, you can tap the vehicle on the screen to get its details.



Trips

Monitor your vehicle on a trip by trip basis with daily/weekly/monthly reports, detailing start time, end time, location, speed and distance covered.



Alerts

Get instant alerts on your phone for ignition on, ignition off, geo-fence enter, geo-fence exist and over speeding.



Reports

Track the overall driving performance of the driver on the basis of a 'Vehicle Score' based on trips taken and violation of the alerts.

MyHyundai Your Car's Digital Companion.



* Terms and Conditions Apply
** Currently available only for Elantra customers

Set your pace to the beat

6 surround sound speakers built into the car for
loud and clear music.



Accelerate to innovation

Cluster gauge integrates 4.2" TFT LCD screen which with its circular rev counter and speedometer is illuminated with backlighting for optimum clarity and readability.



Digital Speedometer
Get a precise digital reading of your speed.



Supervision w/4.2" TFT LCD Screen



Fuel Economy Screen





Take control of your destination

The view before the view. Settle affront a leather stitched tilt and telescopic steering wheel with a horizontally scaped button arrangement for driver convenience.



Multimedia Control



In-Dash Cluster Illumination Control



Auto Cruise Control

Shift perspectives as you shift gears

Offering dynamic & efficient driving performance with the help of rapid-shift and optimized gear-ratio, the ELANTRA offers four drive modes and an easy gear shift.



6-Speed Automatic Transmission

Unmatched fuel economy plus dynamic performance

- A new shift pattern with Sport mode.
- Optimized transmission design for best-in-class fuel economy.







Secure your lead

The highest convenience in the class is provided by new technologies related to advanced riding safety, such as the Dual SRS Airbags.



High Strength Steel

Extended application of Ultra High Tension Steel Plate reinforces chassis rigidity.



ISOFIX Anchor Points

Are situated behind the rear seat head rest.



ISOFIX Child Seat

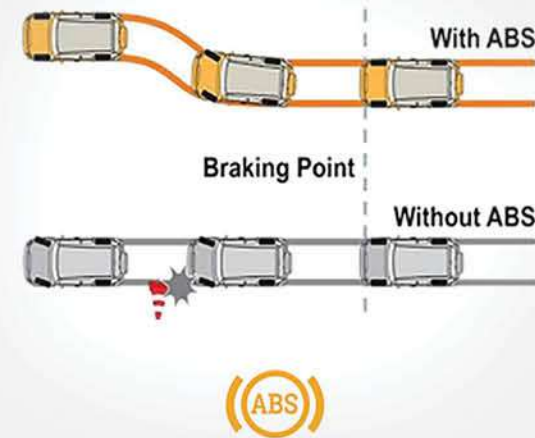


Speed Sensing Door Lock

Automatically locks car doors when the car reaches a certain speed.

Go uphill, fearlessly

Equipped with all the best safety driving features for daily driving and for those occasional maneuvers.



ABS with EBD & BA



Electronic Stability Control (ESC)

Provides optimal control to the engine steering device during sudden braking and turning, in order to maintain vehicle stability.



Hill Start Assist

Maintains the brake pressure for a set period of time as you switch from the brakes to the gas pedal.



Traction Control





Take over the road and then
your destination

Features



Daytime Running Light (DRL)



Power Windows



Luggage Storage



Spare 16" Alloy Wheel



Center Console



Front Cup Holders



Wireless Phone Charging



Dome Lights



High Mounted Stop Lamp



Concealed Boot Lid Button



Front Door Armrest with Map Pocket



Rear Arm Rest with Cup Holder



Sunglasses Holder



Vanity Mirror with Illumination



AUX/USB

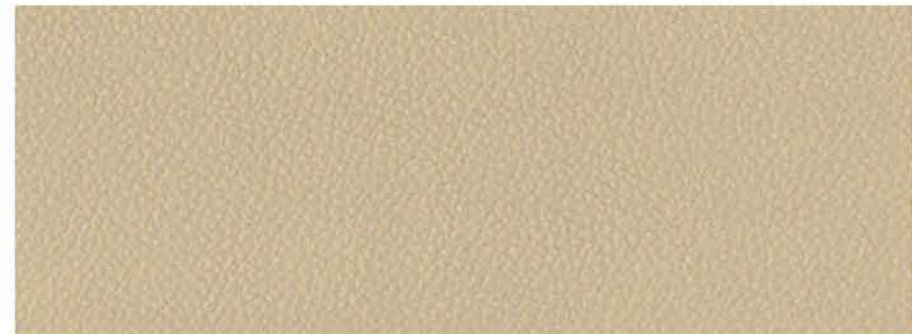
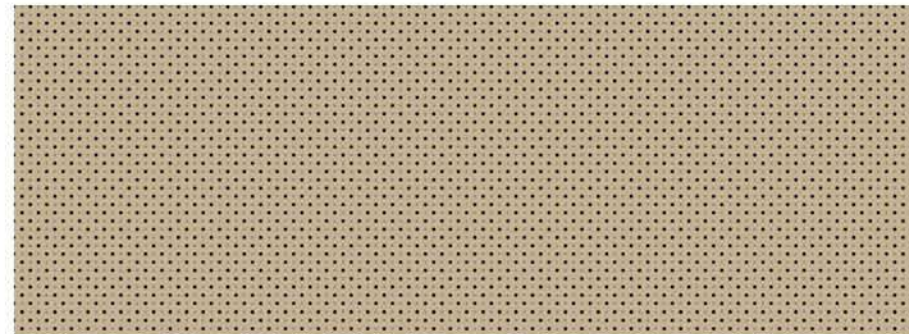


Glove Box

Trim



Beige two-tone Interior



Colors



Polar White



Silver Metallic



Graphite Grey Metallic



Black Diamond Metallic



Teal Blue



Fiery Red

Specifications

Brand	Hyundai		
Model	Elantra 2.0 GLS	Elantra 1.6 GL	
Body Type	Sedan	Sedan	
Exterior L x W x H (mm)	4620 x 1800 x 1450	4620 x 1800 x 1450	
Wheelbase (mm)	2700	2700	
Kerb Weight (kg)	1255 - 1373	1225 - 1342	
Gross Vehicle Weight (kg)	1780	1760	
Minimum Turning Radius (m)	5.3	5.3	
Number of Doors	4 Doors	4 Doors	
Seating Capacity	5 Persons	5 Persons	
Number of Seating Rows	2 Rows	2 Rows	
Luggage Compartment Capacity (Ltr.)	407	407	
Engine			
Engine Type	2.0 Mpi Gasoline Engine	1.6 MPi Gasoline Engine	
Fuel Type	Petrol	Petrol	
Emission Standard	Euro 2	Euro 2	
Displacement (cc)	1999	1591	
Max Power kW (HP) / rpm	115 (154)/6200	94 (126) / 6300	
Max Torque N-m / rpm	195 / 4500	155 / 4850	
Engine Type	DOHC 16-Valve w / Dual CVVT	DOHC 16-Valve	
Cylinders	In-Line 4-Cylinder	In-Line 4-Cylinder	
Compression Ratio	10.3	10.5	
Fuel System	MPI	MPI	
Fuel Tank Capacity (Ltr.)	50	50	
Drive Type & Transmission			
Drive	2WD	2WD	
Transmission	6-Speed A/T	6-Speed A/T	
Drive Mode Select	Sports / Smart / Eco / Normal	X	
Wheel & Tyre			
Wheel & Tyre	Wheel Type	Alloy Wheel	Alloy Wheel
	Wheel Size	16"	16"
	Tyre Size	215 / 55R16	215 / 55R16
Spare Tyre	Full Size Wheel & Tyre	Full Size	Full Size
	Wheel Type	Alloy Wheel	Alloy Wheel
Suspension			
Front	MacPherson Strut	MacPherson Strut	
Rear	Torsion Beam	Torsion Beam	

Specifications

Steering Wheel			
Steering Wheel	Material	3-Spoke Leather	3-Spoke Polyurethane
	Power Steering	•	•
	Adjustment	Tilt & Telescopic	Tilt & Telescopic
Steering Switches		Audio + MID + Voice Command	Audio + MID + Voice Command
TGS Knob		Leather	Soft PVC
Brake			
Brake	Front	Ventilated Disc	Ventilated Disc
	Rear	Disc 14"	Disc 14"
Anti-Lock Braking System (ABS)		•	•
Electronic Brake-Force Distribution (EBD)		•	X
Brake Assist (BA)		•	X
Parking Brake	Type	Hand Parking	Hand Parking
Locks & Security			
Door Locking	Central Door Locking	•	•
	Speed Sensing Door Lock	•	•
	Child Safety Lock	•(Manual)	•(Manual)
Remote Tail Gate Opener		•	•
Remote Boot-Lid Opener		•	•
Smart Trunk Opener		•	X
Key Set	Wireless Key	Smart Key with Welcome Lamp	Jack Knife
	Burglar Alarm	•	•
Push Start		•	X
Immobilizer		•	•
Exterior			
Front Radiator Grille		Chrome Coating	Chrome Coating
Bumper	Front	Body Colour	Body Colour
	Rear	Body Colour	Body Colour
Side Mirror	Finish	Body Colour	Body Colour
	Electrically Adjustable	•	•
	Electrically Retractable	•	•
	With LED Turn Signal	•	•
Mud Guard (Front & Rear)		•	•
Rain-sensing Wipers		•	X
Side Moulding		Beltline, Chrome Coating	Beltline, Chrome Coating
Door			
Door Trim		Hi - Fabric + PVC	Hi - Fabric + PVC
Map Pocket		•	•
Door Outside Handle		Chrome Coating	Chrome Coating
Door Inside Handle		Silver Paint	Silver Paint
Power Window		•	•

Specifications

Roof			
Sunroof		•	•
Inside Rear View Mirror		Day & Night	Day & Night
Sunvisor	Vanity Mirror	•	• (without lamp)
Antenna		Shark Fin	Shark Fin
Seat			
Seat Upholstery		Leather	Hi-Fabric
Headrest		Up / Down (D+P)	Up / Down (D+P)
Seat Height Adjuster		D+P	Driver only (Manual)
- Driver (8-way) + Lumbar Support (2- Way)		•	X
Centre Console Box		PVC Deluxe	PVC Deluxe
Foot Rest		•	•
Seat Back Pocket		•	•
Headrest		Up / Down (LH/RH)	Up / Down (LH/RH)
Armrest with Cup Holder		•	•
Rear Seat Folding		60:40 Split Folding Seats	60:40 Split Folding Seats
Lighting			
Headlamp		Tetra LED Headlamps	Tetra LED Headlamps
Daytime Running Lamp		LED	LED
Rear Combination Lamp		LED	LED
Front Personal Lamp		• (with Sunglasses Holder)	• (with Sunglasses Holder)
Room Lamp		•	•
Instrument Panel			
Cluster Type		Supervision w/ 4.2" TFT LCD	Supervision w/ 4.2" TFT LCD
Speedometer		Optitron Meter + Digital Speedometer	Optitron Meter + Digital Speedometer
In-dash Cluster Illumination Control		•	•
Tachometer		•	•
Comfort & Safety			
Air Bags		Driver + Passenger	Driver + Passenger
Seat Belt		3 Point ELR x 2 with Pretensioner and Force Limiter	3 Point ELR x 2 with Pretensioner and Force Limiter
Front			
Rear		3 Point ELR x 2 + 2 Point NR	3 Point ELR x 2 + 2 Point NR
ISOFIX Seat Anchors		•	•
Auto Light Control		•	•
Electronic Stability Control (ESC)		•	X
Hill-Start Assist Control (HAC)		•	X
Traction Control System (TCS)		•	X
Auto Cruise Control		•	X
Trip Computer		•	•
Seat Belt Warning		•	•
Battery Charger		Wireless & USB	USB only
Headlight Delay		•	•

Specifications

AVN			
Audio		AM / FM Radio	•
MP3		•	•
Screen		8" Display	8" Display
Connectivity		USB / AUX	•
Bluetooth		•	•
MyHyundai Application		•	•
Camera		Rear View Camera	•
Number of Speakers		6	6
Heater & Air Conditioner			
Air Conditioner		• (Dual zone with Auto Climate Control)	•
Auto Defogger		•	X
Rear AC Ventilation		•	•
Glass			
Glass (Windshield / Front Rear Door / Backlite)		Tint	Glass

- The above values are results from internal testing and are subject to change after validation.
- Some of the equipment illustrated or described in this catalog may not be supplied as standard equipment and may be available at extra cost.
- Hyundai Nishat Motor (Private) Limited reserves the right to change specifications and equipment without prior notice.
- The color plates shown may vary slightly from the actual colors due to the limitations of the printing process.
- Please consult your dealer for full information and available colors and trims.





About Us

Hyundai Nishat Motor (Private) Limited, a Nishat Group company, is a joint venture among three leading international businesses; Nishat Group, Sojitz Corporation (Japan) and Millat Tractors Ltd. Hyundai Motor Company (Korea) has partnered with Hyundai Nishat for the manufacturing, marketing and distribution of Hyundai's product line in Pakistan. Hyundai Nishat aspires to be amongst the leading auto manufacturers in Pakistan in the coming years to align its track record with other sister concerns of the Nishat Group. Our vision is to become the most valued automobile brand and recreate the global success of Hyundai in Pakistan.

Since our inception in 2017, we are rapidly establishing our 3S distribution network across the country through our partner franchisees. Our manufacturing plant, being set up in the largest industrial estate of Pakistan, avows world class precision with the deployment of the most advanced production techniques.

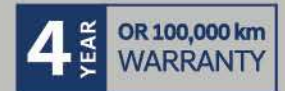


Hyundai Nishat Motor (Private) Limited

1-B Aziz Avenue, Canal Bank Road, Gulberg-V, Lahore, Pakistan

info@hyundai-nishat.com

[f](#) [@](#) [in](#) [▶](#) [hyundaipakistan](#) [www.hyundai-nishat.com](#) [+92-42-111 111 466](#)



*Whichever comes first

**Terms and conditions apply